

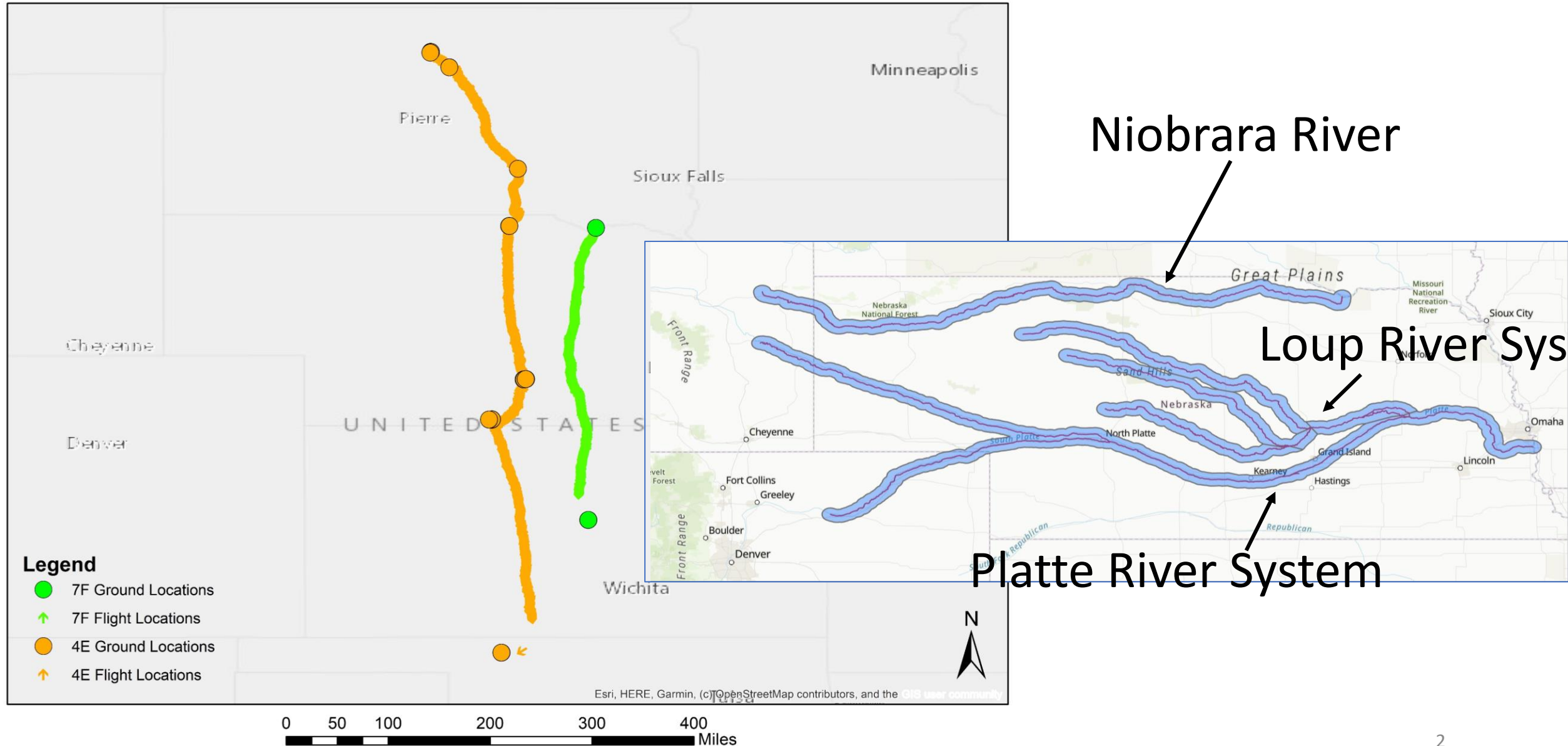
A photograph of a wetland landscape with several whooping cranes. The cranes are white with long necks and legs, and some have brown and white plumage. They are standing in a shallow, blue body of water. The background is filled with tall, dry grasses and bare trees, suggesting a late autumn or winter setting. The text is overlaid in white, bold, sans-serif font.

Whooping Crane Stopover/Flyover – Working Group Update

Patrick Farrell

October 2024 TAC Meeting

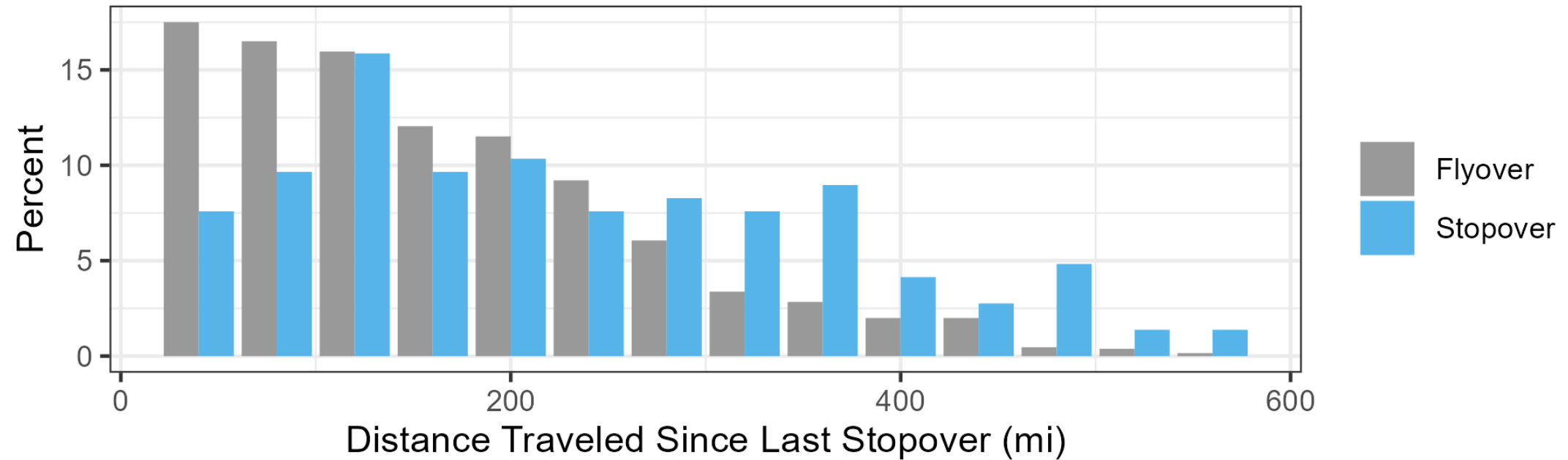
Stopovers and Flyovers



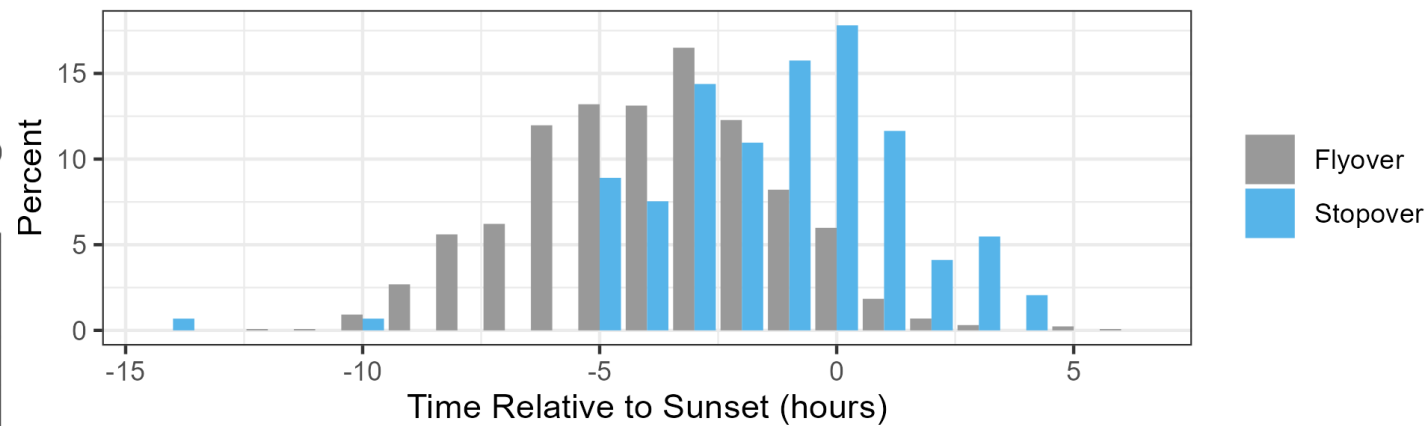
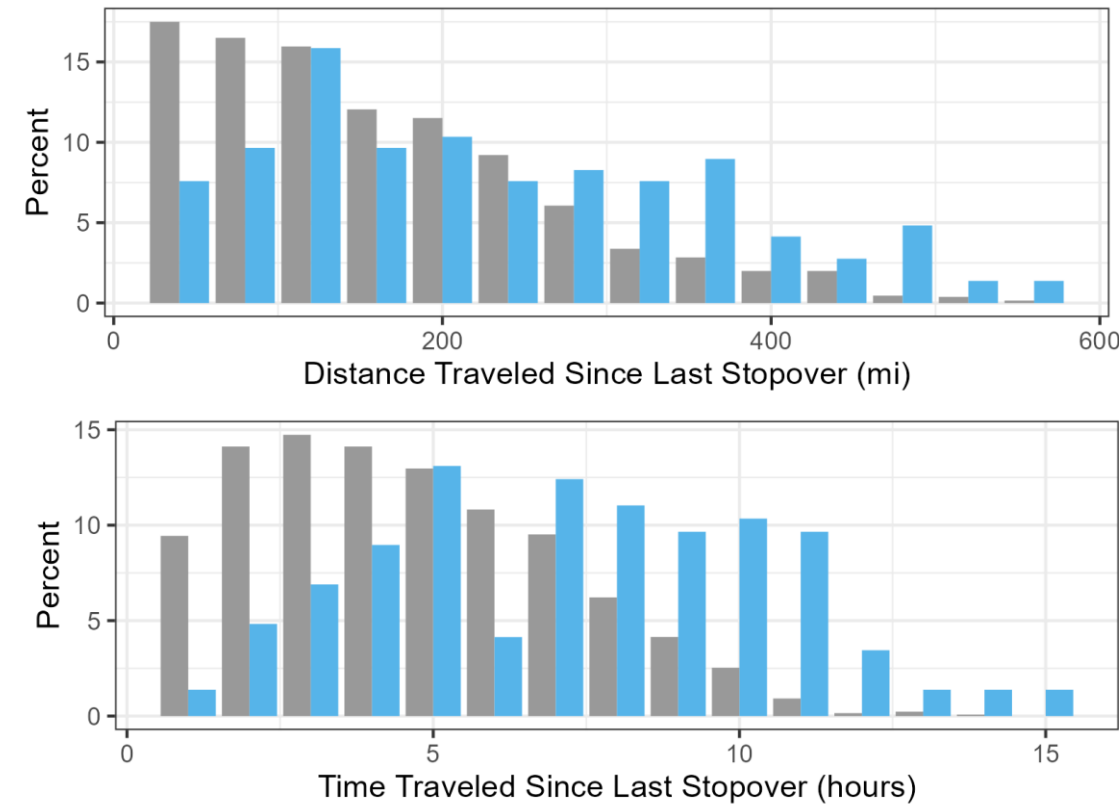
Unmanageable, Non-Habitat Factors – All Rivers

Stopovers = 143

Flyovers = 1,303

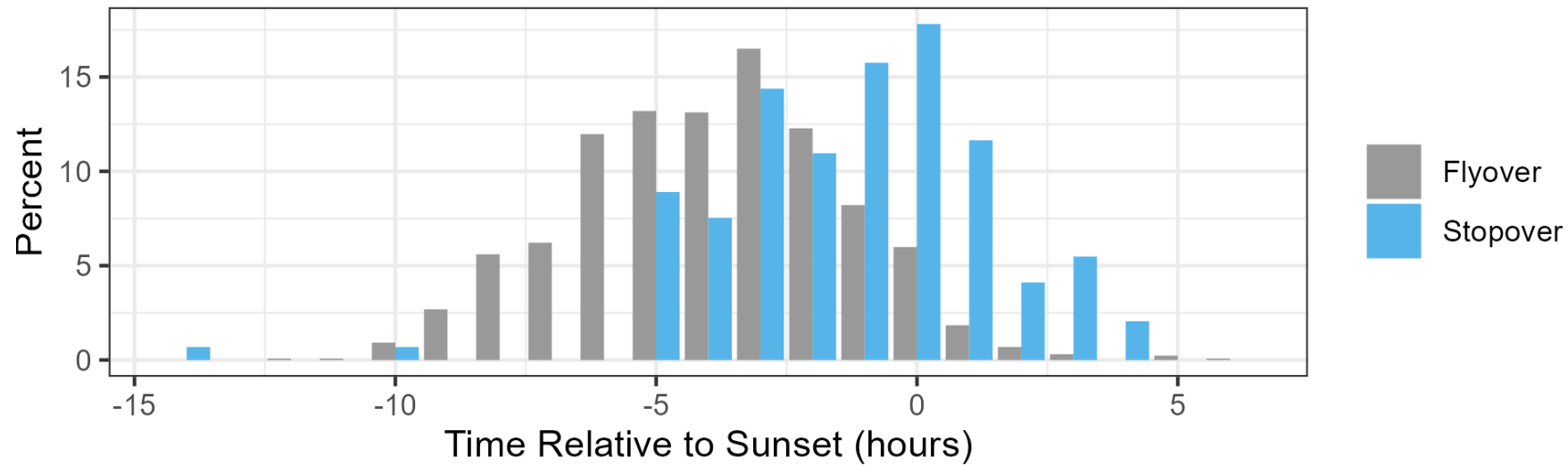


Unmanageable, Non-Habitat Factors – All Rivers



Unmanageable, Non-Habitat Factors – By River

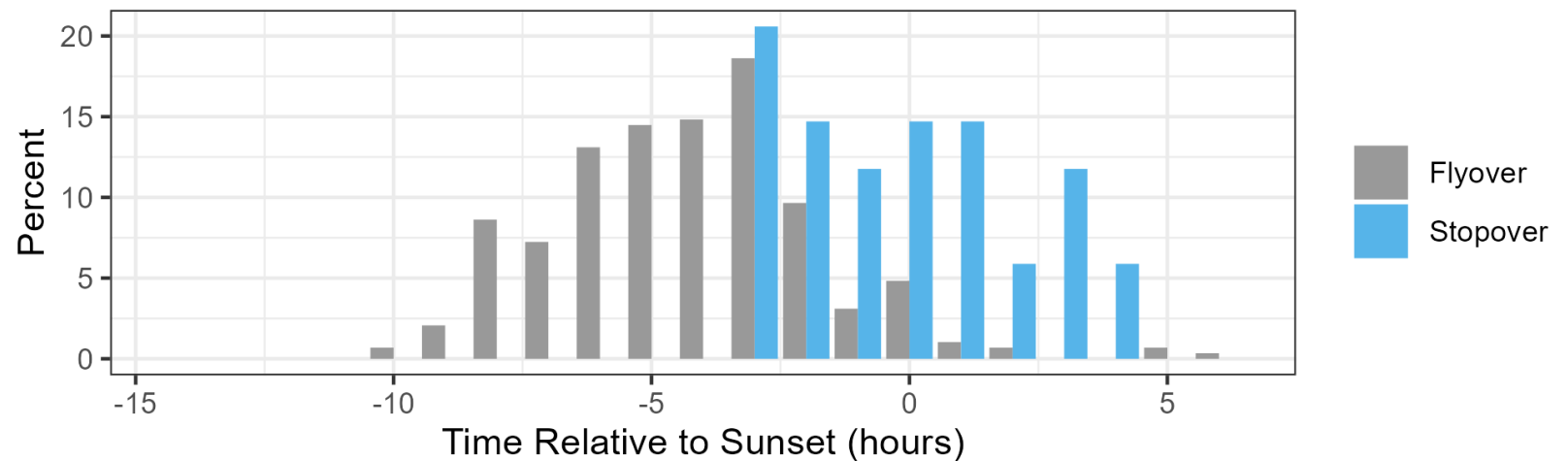
All Rivers



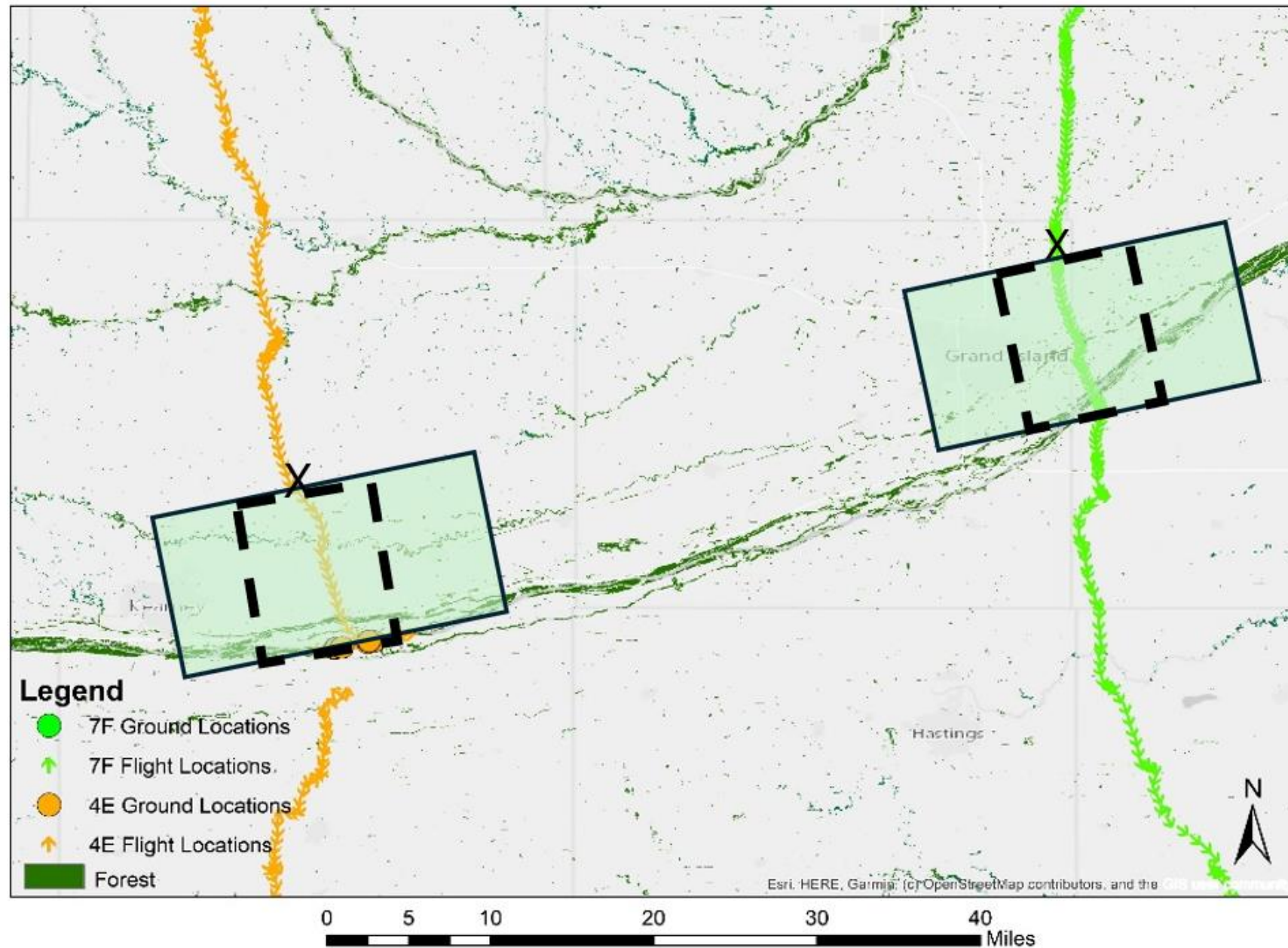
Platte River

Stopovers = 34

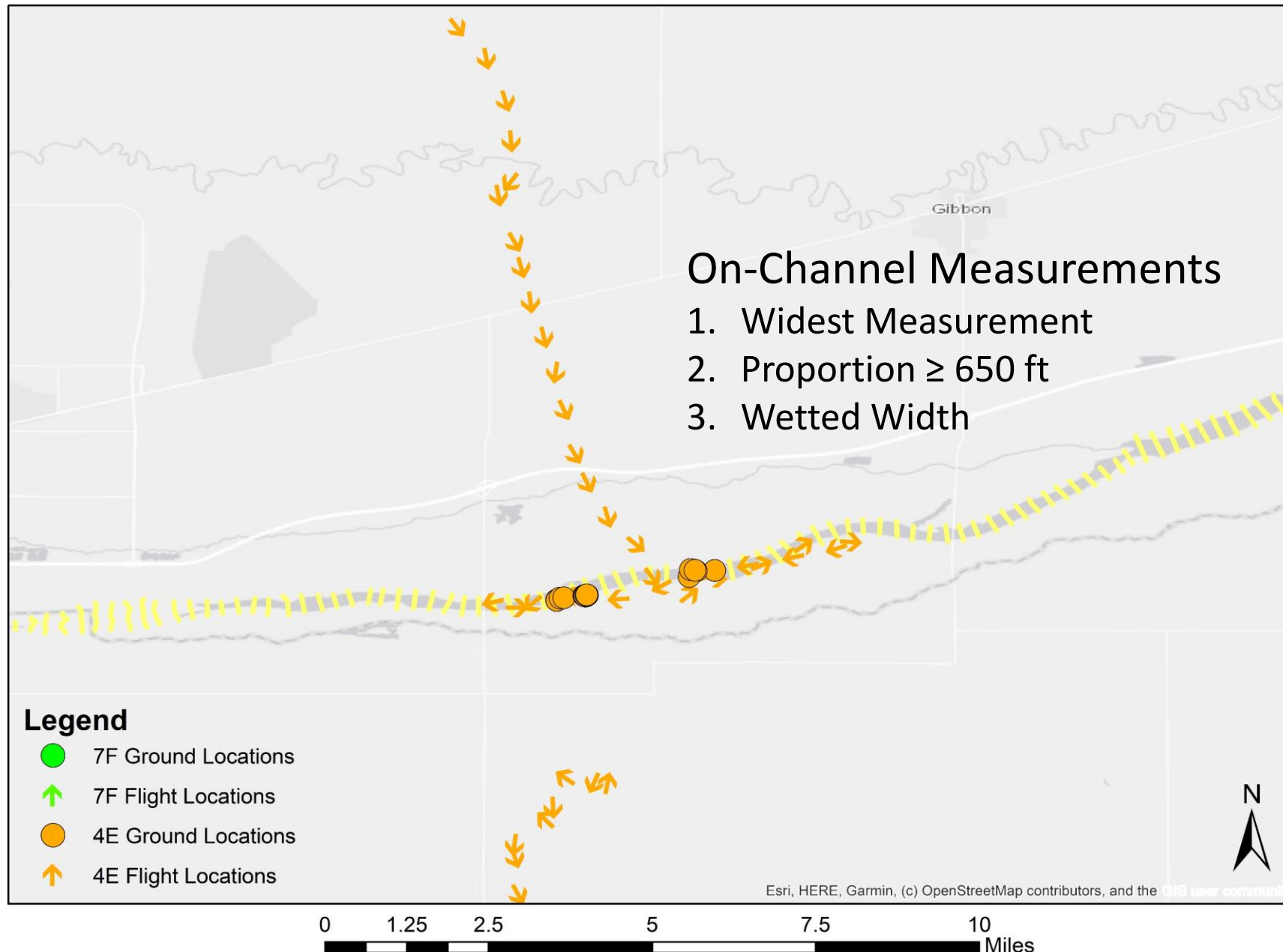
Flyovers = 290



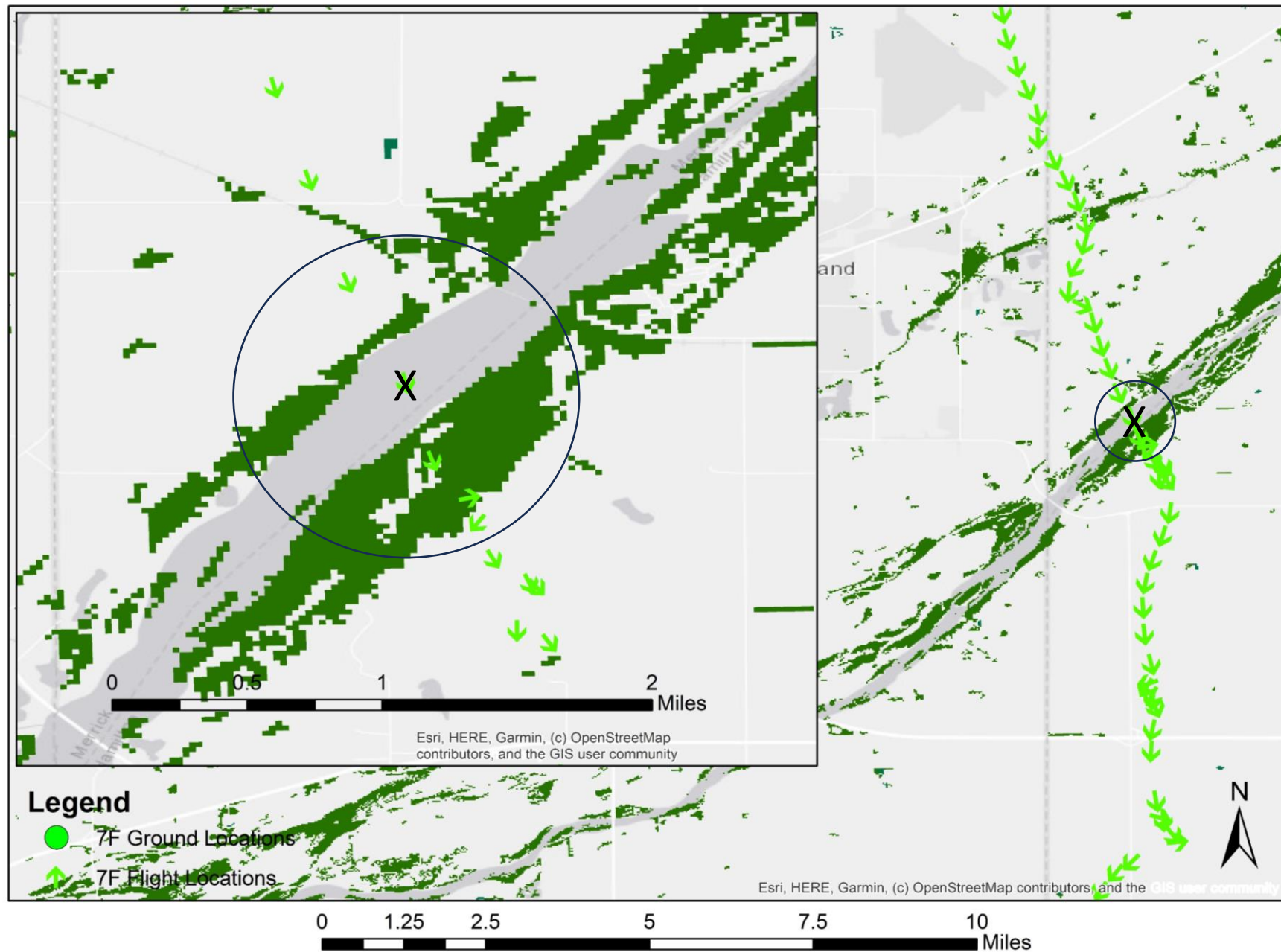
Multiple Scales – Final Approach



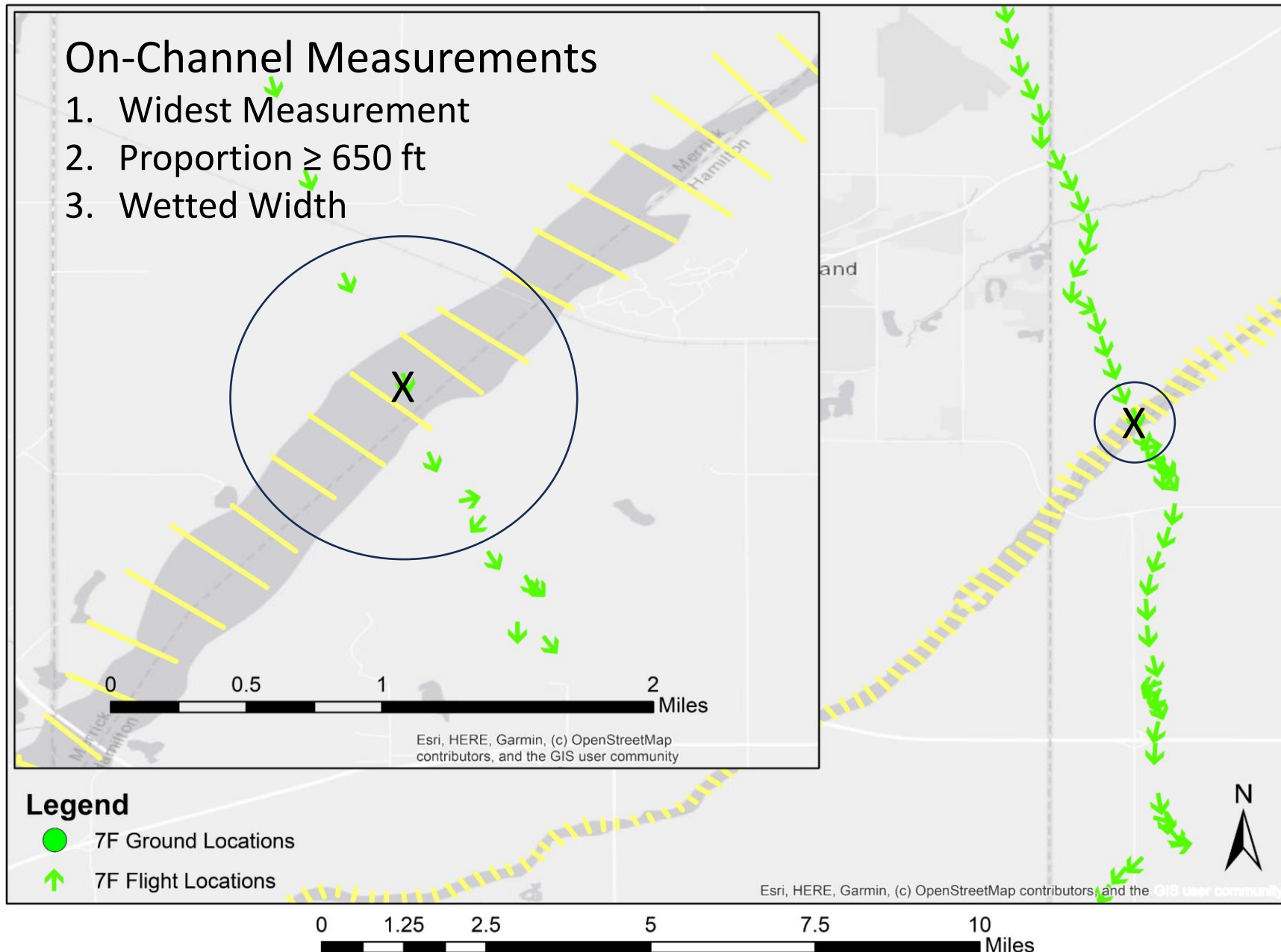
Multiple Scales - Final Approach



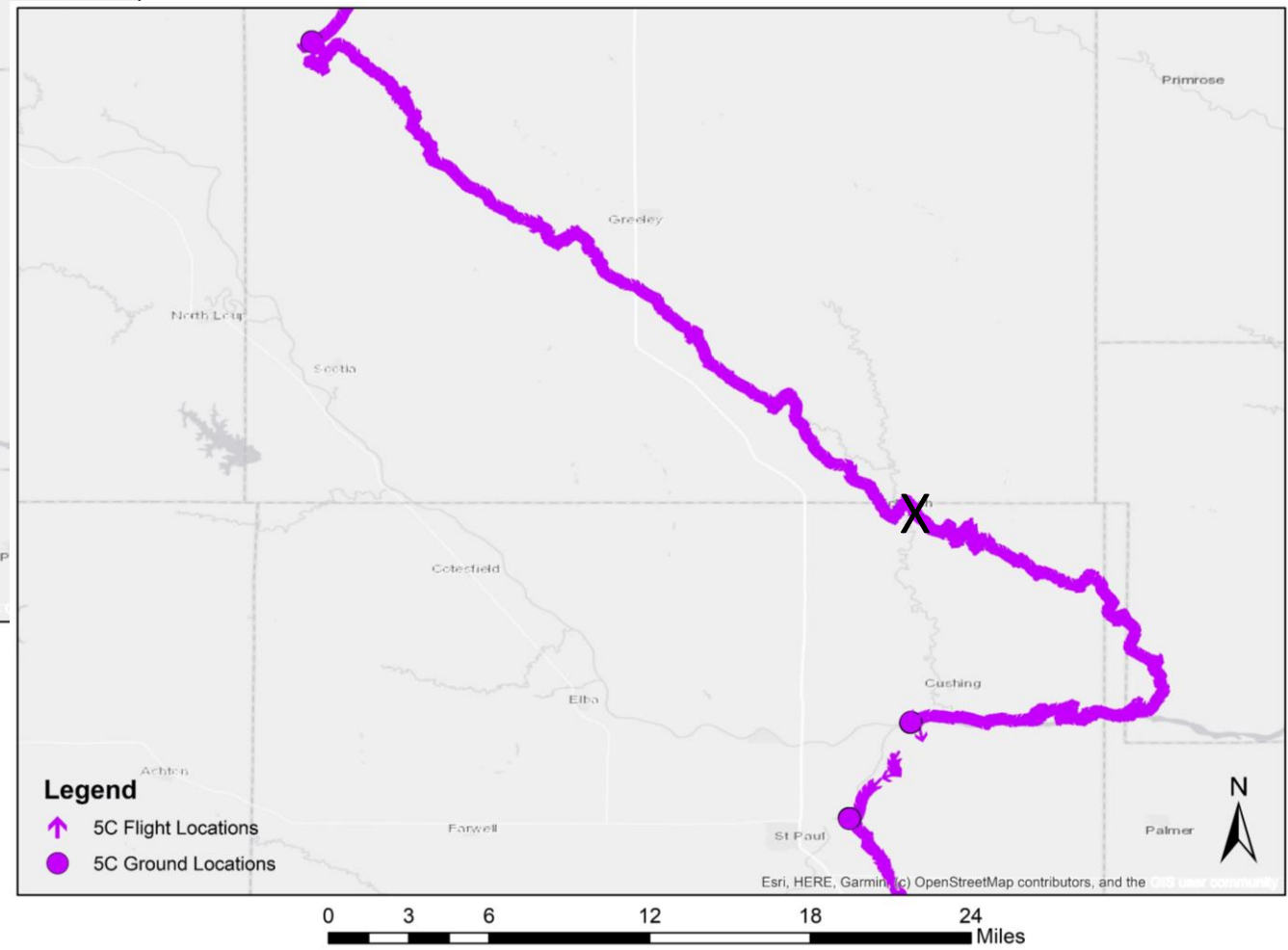
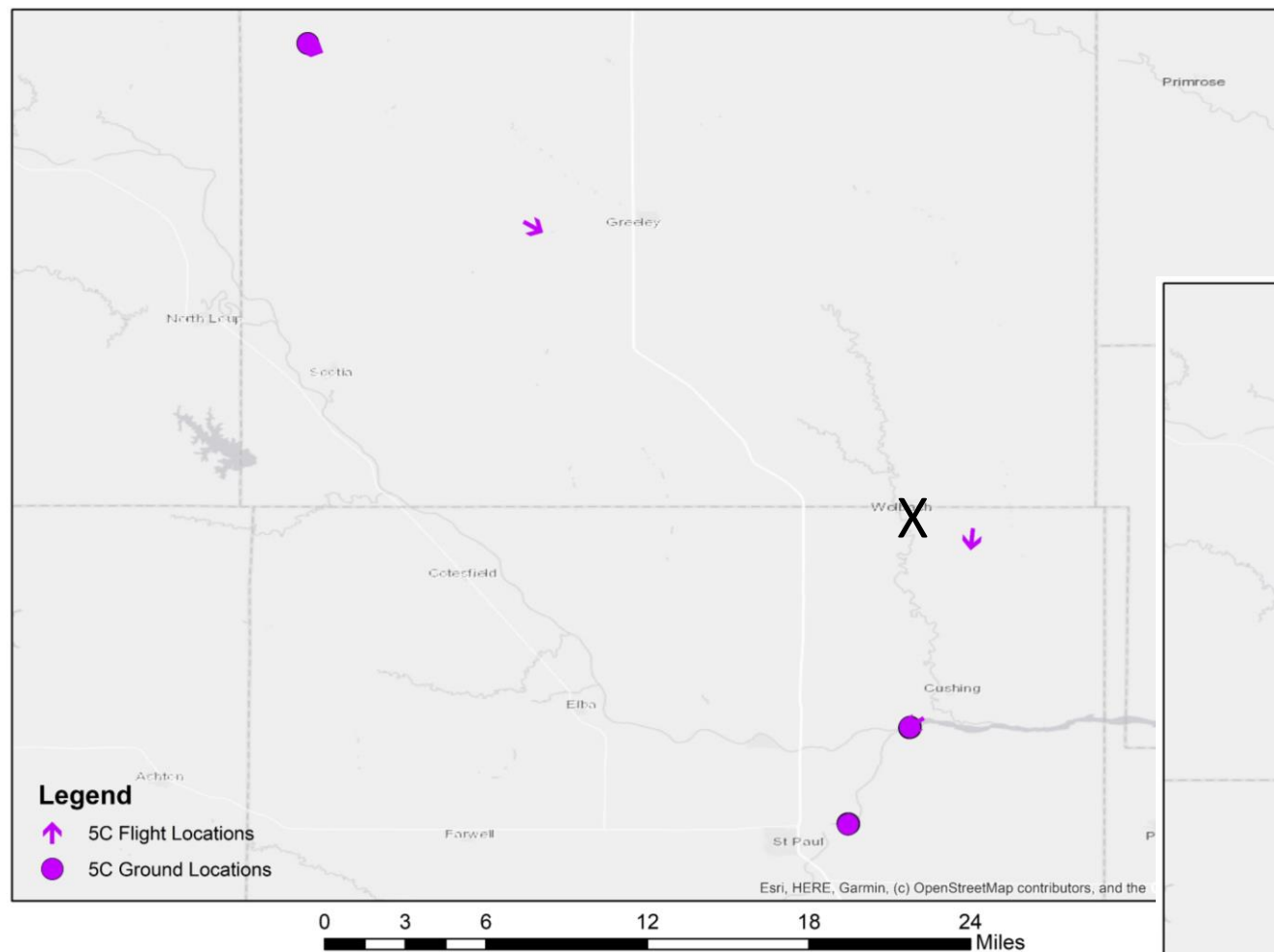
Multiple Scales – On-Channel



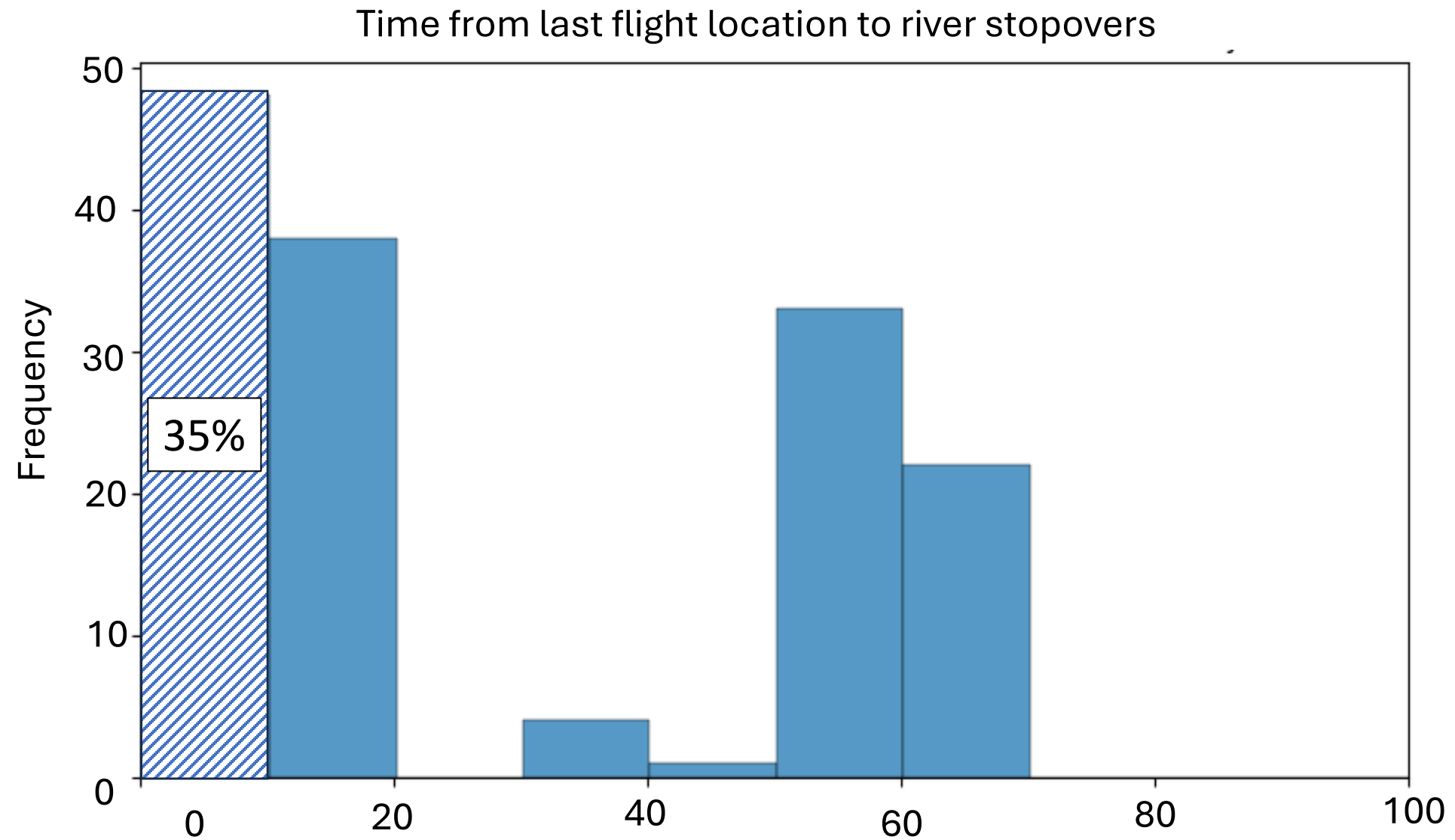
Multiple Scales – On-Channel



Telemetry Data Frequency



Telemetry Data Frequency



Next Steps for Working Group

- Explanatory variables:
 - Identify what other factors should be quantified during the final approach and river encounter.
- Data Sources
 - Consider temporal scale and spatial scale